

PLUS ART SPECIAL *The artists, the studios, the shows*

# HOUSE & GARDEN<sup>®</sup>

NOVEMBER  
2021  
-  
£4.99

11 >  
9 4770043 575278

OUTSTANDING  
INTERIORS  
FROM GEORGIAN ELEGANCE  
IN THE WEST COUNTRY TO  
CONTEMPORARY CITY LIVING

# *The* TOP 100

THE VERY BEST INTERIOR DESIGNERS & ARCHITECTS  
*and* THE TOP 50 GARDEN DESIGNERS





## HEART OF THE HOME

If you are planning a kitchen redesign, look to Pluck, whose focus is on creating simple, practical and beautiful spaces. Available in a refined palette of colours and woods, these modern kitchens are designed and made in London using sustainable methods and materials. Pared-back and sophisticated, the cabinetry blends seamlessly with both period and contemporary interiors. [pluck.kitchen](http://pluck.kitchen)

# HOUSE & GARDEN

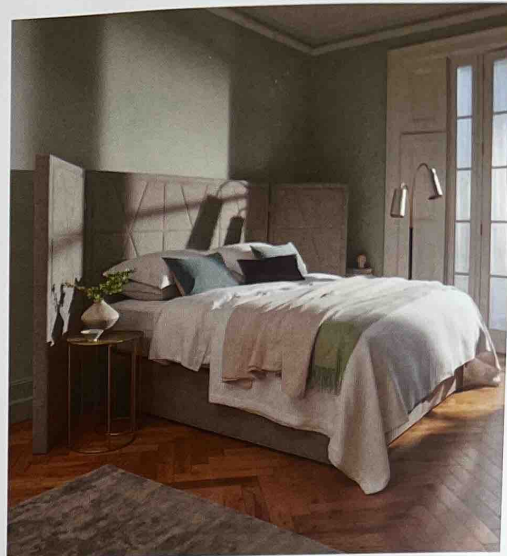
NOVEMBER 2021



## FROM THE PUBLISHER

At this time of year, our thoughts turn to our homes, where we will be spending much more time over the coming months. A Vispring bed will ease you into the darker mornings, while Warner House's fabrics and home accessories are ideal for those looking to create a cocooning space. It is also time to start planning for the festive season ahead, and there is no better place to do so than at the annual Spirit of Christmas fair.

EMMA REDMAYNE  
PUBLISHING DIRECTOR



## DREAM ON

British brand Vispring has been making beds since 1901, and today they are more luxurious than ever. The Diamond Majesty, President divan and opulent art deco-inspired Grand Berkeley headboard (above) are handmade in the UK using only the finest, sustainably sourced, natural materials, including Shetland wool, silk, cashmere, bamboo and rare vicuña. It is available exclusively at Harrods. [vispring.com](http://vispring.com)



## HOUSE STYLE

Founded in 1870, Warner Fabrics became one of the greatest names in British textiles, supplying esteemed institutions worldwide including the Palace of Westminster and the White House. It has recently relaunched as Warner House online, offering an appealing selection of printed and woven fabrics, wallpapers, paints, furniture and home accessories. [warner-house.com](http://warner-house.com)



## PRIDE OF LONDON

The Surprise, SW3, has re-opened under the new ownership of Jack Greenall following a glorious transformation by interior designer Isabella Worsley. Set in a tranquil corner of Chelsea, the freehouse serves a delicious seasonal menu, a world-class wine list and an extensive beer and spirit selection within a warmly inviting setting that feels much like a beloved village pub. [thesurprise-chelsea.co.uk](http://thesurprise-chelsea.co.uk)



## SPIRIT OF CHRISTMAS

We look forward to welcoming you to Olympia London, from November 1-7. Subscribers can claim a complimentary standard ticket valid any day, or upgrade to a multi-day pass from £7.50. A transaction fee of £2.50 applies for all tickets, and the advance box office closes on October 31. Simply enter code NOVSUB and your subscriber number when booking online at [spiritofchristmasfair.co.uk](http://spiritofchristmasfair.co.uk)



H&G *partnership*

LEFT FROM TOP Roquefort salad with endive, pear, walnuts and a blue cheese vinaigrette. An inviting corner of the downstairs restaurant designed by Isabella Worsley

## LOCAL LANDMARK

Refreshingly independent and warmly welcoming, The Surprise, Chelsea serves up delicious seasonal fare in a freehouse steeped in London's rich history

With its many world-class hotels, iconic attractions and fabled shopping destinations, it is hard to believe that there is still room in Chelsea for the kind of tranquil residential street on which you will find The Surprise.

Established in 1853 in a handsome red-brick building on Christchurch Terrace, SW3, this neighbourhood freehouse takes its name from *HMS Surprise*, the French corvette that was captured and renamed by the Royal Navy in the days of Admiral Nelson. More recent history has seen The Surprise recover from Second World War bomb damage, earn a loyal following of Chelsea Pensioners and art-school bohemians, and, rumour has it, even house a pet lion in its upstairs rooms.

Today, this pub and restaurant attracts Chelsea-dwellers and visitors alike with its regularly changing menu of local, seasonal dishes, an extensive range of wines, beers and spirits, and a convivial village pub atmosphere. Situated in close proximity to the Royal Hospital Chelsea and Chelsea Physic Garden, it is also an ideal destination for those wishing to explore this charming corner of south-west London.

Fresh from his success with The Pheasant, a country pub and acclaimed restaurant with rooms near Hungerford in Berkshire, landlord Jack Greenall has overseen a complete refurbishment of this freehouse, with the help of top London-based interior designer Isabella Worsley. With a rich, earthy colour palette, characterful upcycled details and an eclectic collection of art, books and games, the interior now perfectly embodies the spirit of this beloved local landmark – steeped in history and intrigue yet effortlessly relaxed and inviting. *The Surprise: 6 Christchurch Terrace, London SW3 4AJ; 020 3837 4600; the-surprise-chelsea.co.uk*

HELEN GATHCART

